

GIS for local government and energy planning

ESTGIS Annual Conference

October 14, 2016

Håkan Karlsson, Systems Engineer GIS

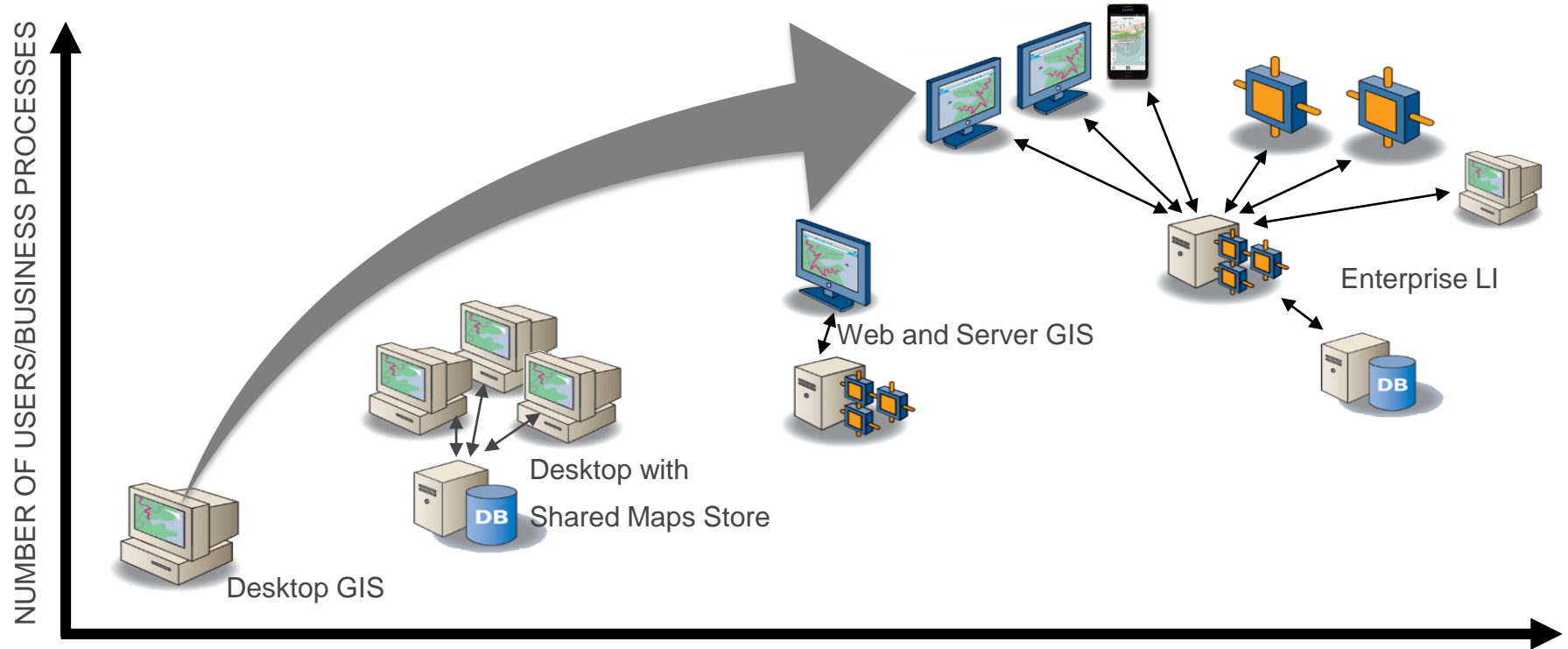


Desktop GIS

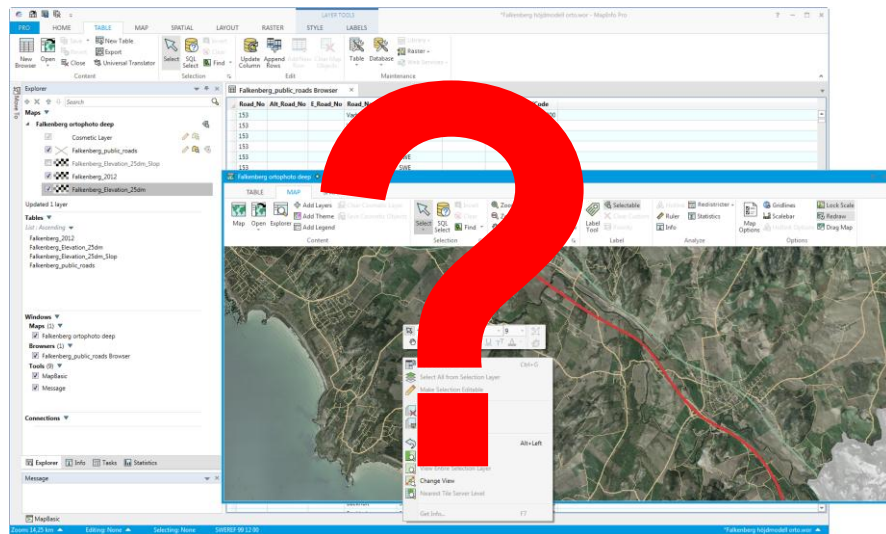
**Swedish case studies in Local
Government and Energy planning**



Evolution of the GIS eco system

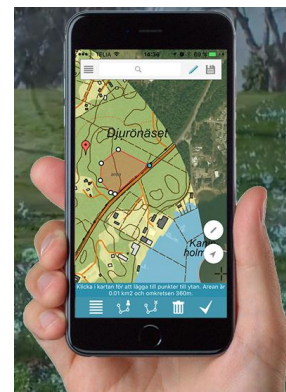
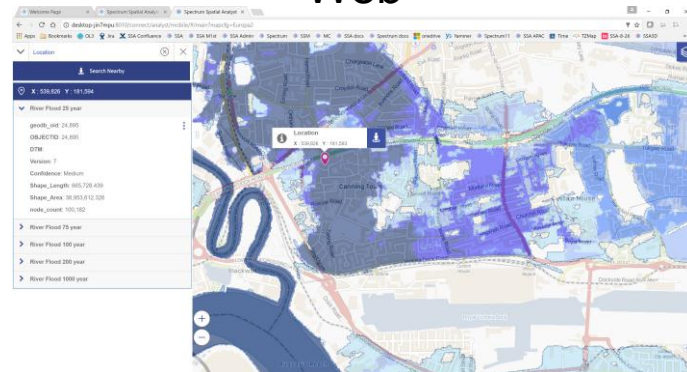


“Desktop GIS is dead!” – True or false?



Desktop GIS

Web



Mobile

Desktop GIS strengths

The background of the slide features a gradient from dark blue at the top to a mix of blue and purple at the bottom. In the lower right quadrant, there are several thin, white, wavy lines that flow from the bottom left towards the right edge, creating a sense of movement and depth.

Preparing and validating data

Edit and verify geometries

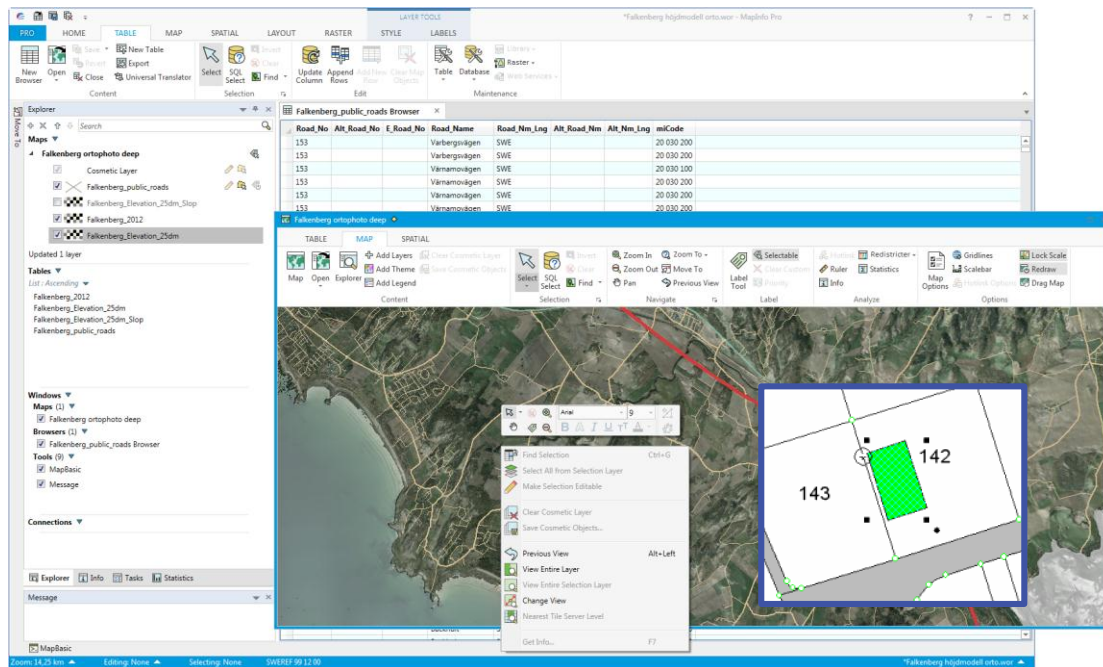
- Create, edit, check

Edit and verify attributes

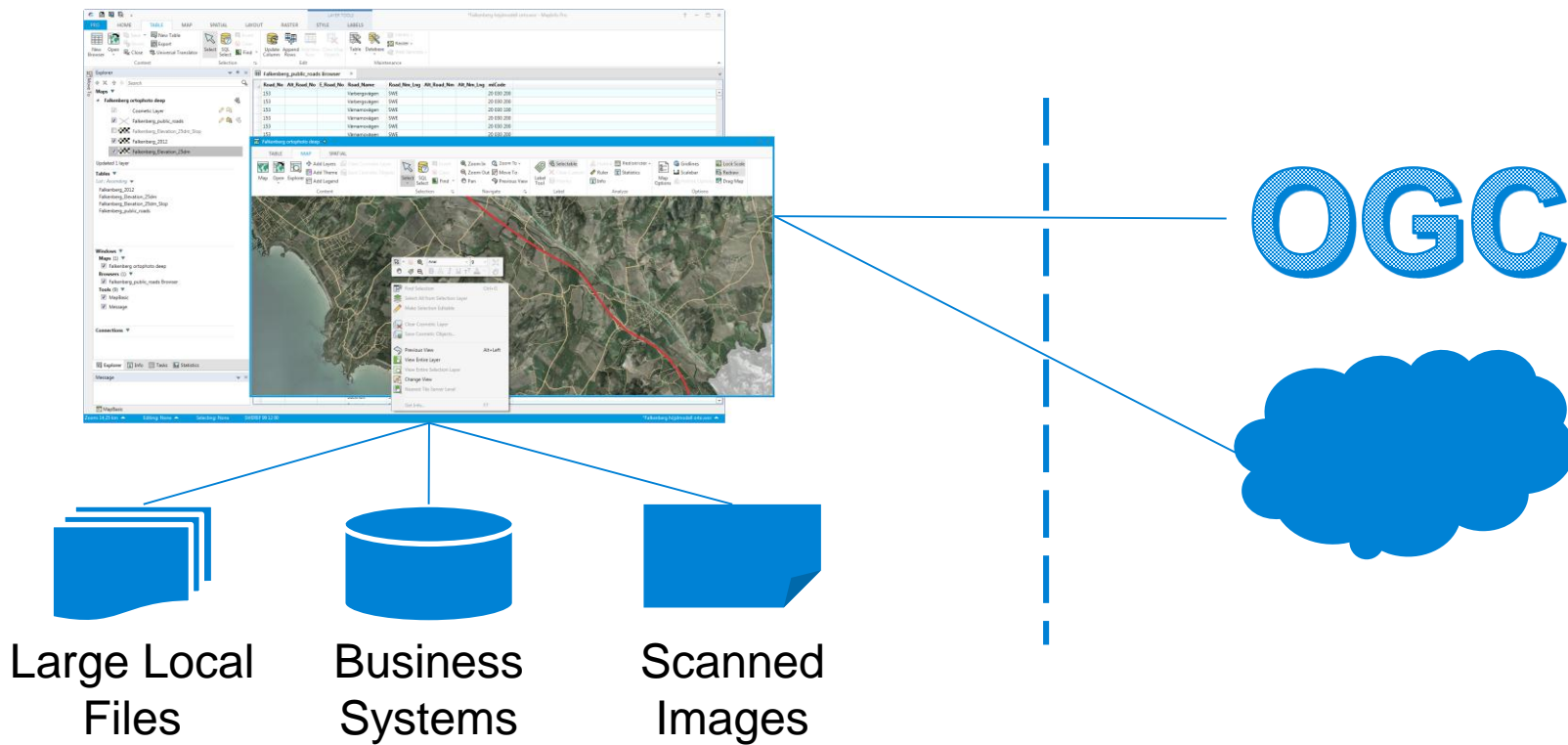
- Insert, update, aggregate

Create map definition

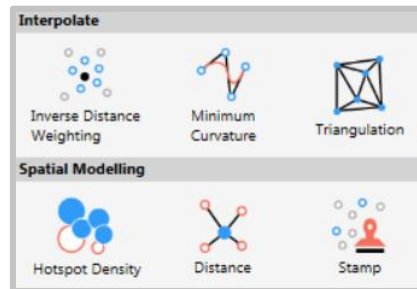
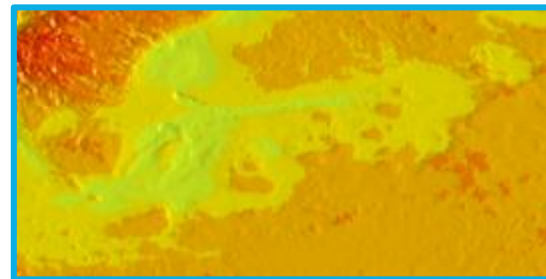
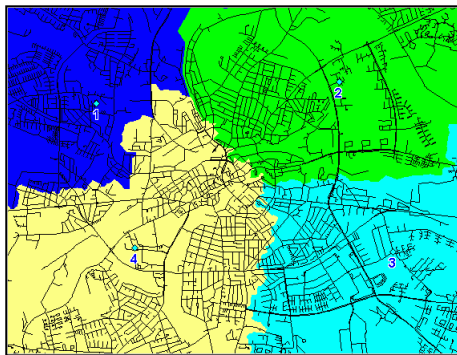
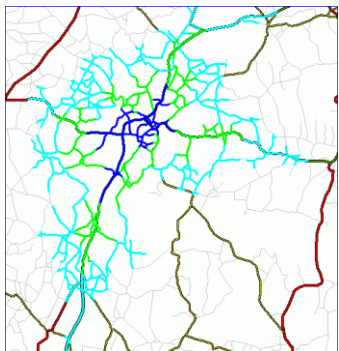
- Look 'n feel per zoom level



Combining multiple and large datasets add-hoc

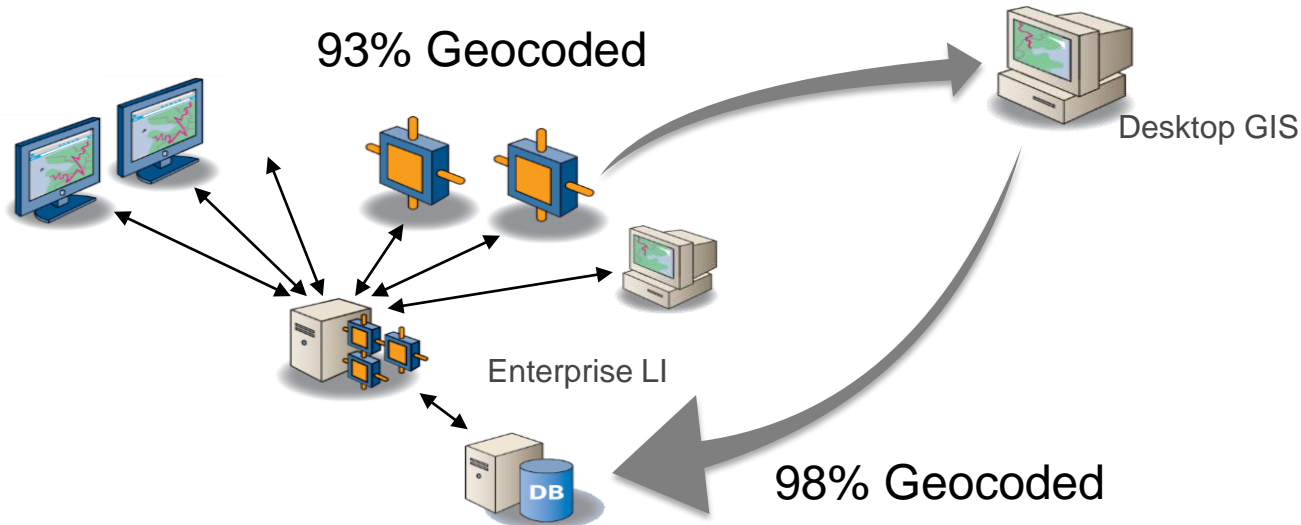


Advanced analysis requiring rich toolsets

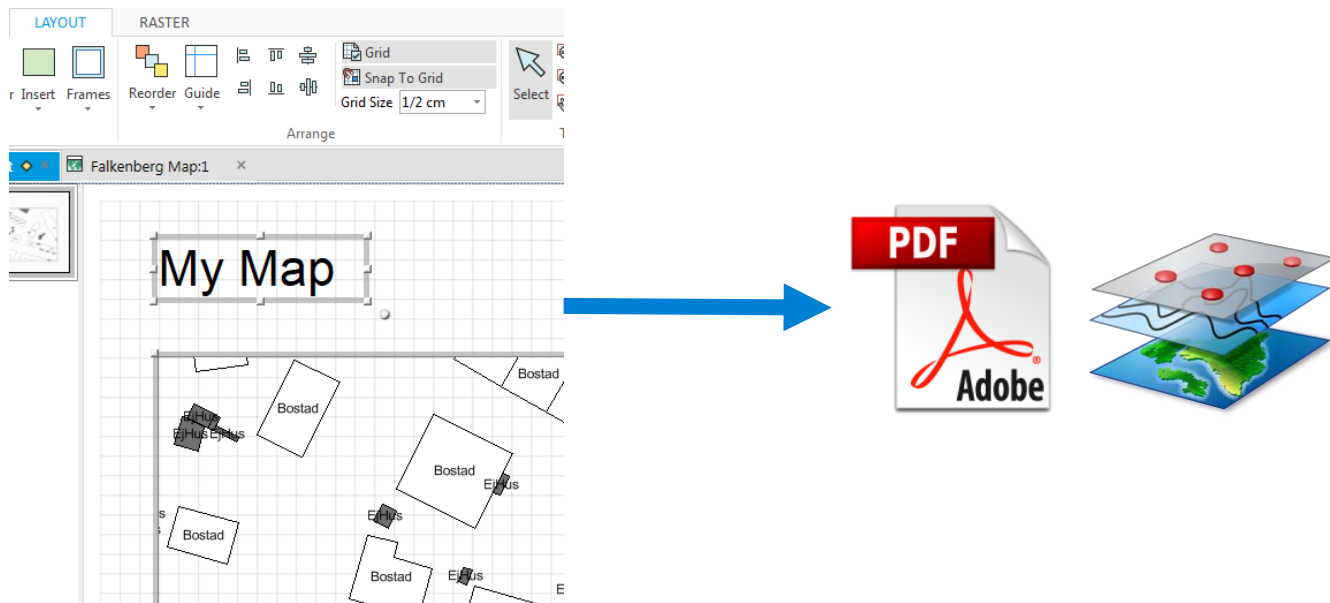


Exception Management

- Correct the data
- Complete the data
- Interpret the data

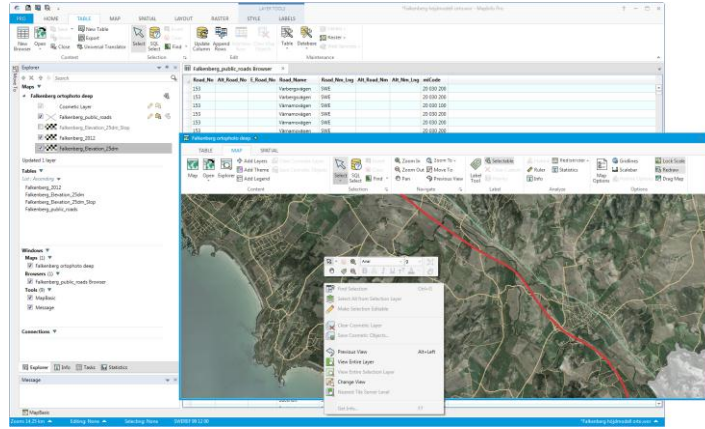


Producing Custom Reports

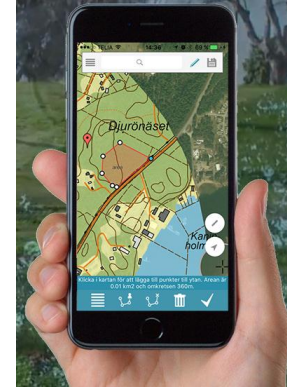


Desktop publishing capability

And what about off-line?

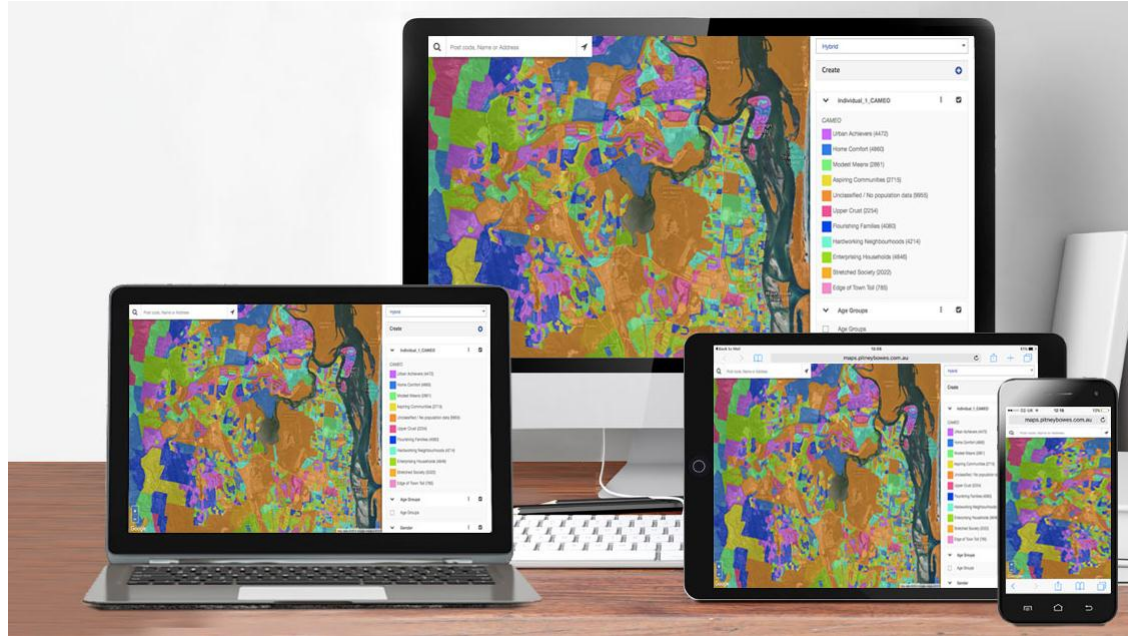


Rich toolset
Large volumes of local data



Limited toolset
Limited local data

Conclusion

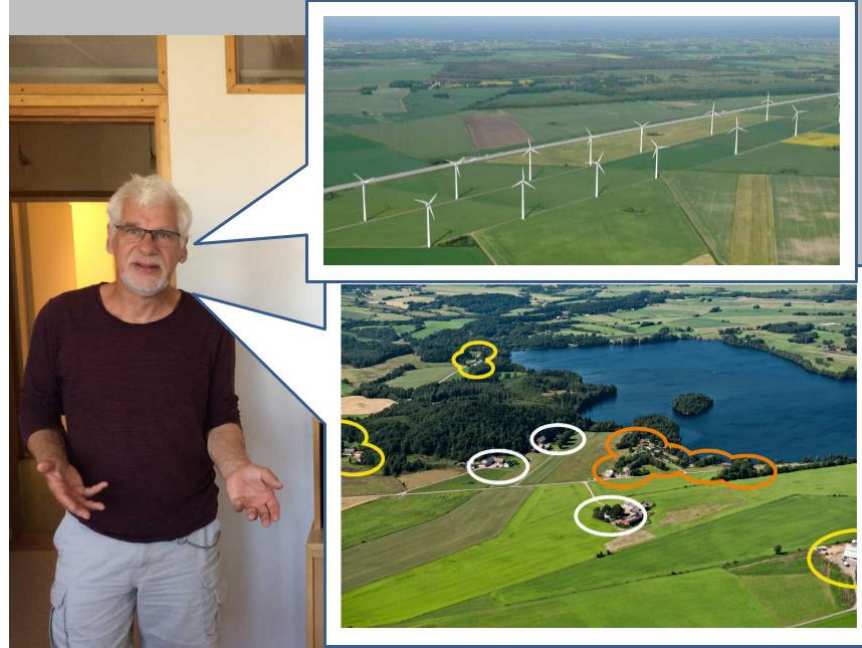


Desktop GIS is part of the mix for many years to come!

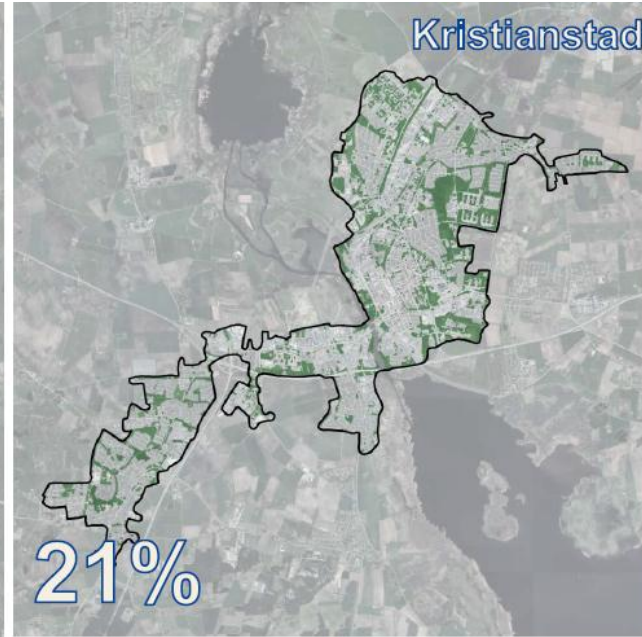
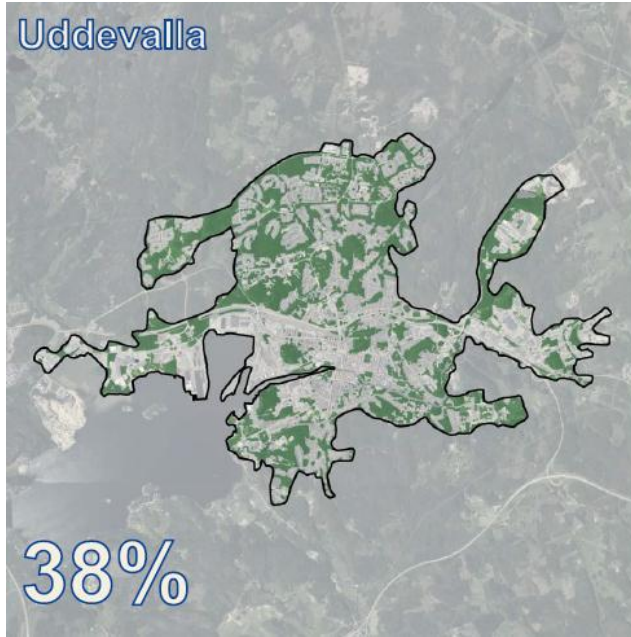
Swedish case studies with Desktop GIS

The background of the slide features a gradient from dark blue on the left to a deep purple on the right. In the lower right corner, there are several thin, white, wavy lines that create a sense of motion and depth, resembling stylized waves or a digital signal.

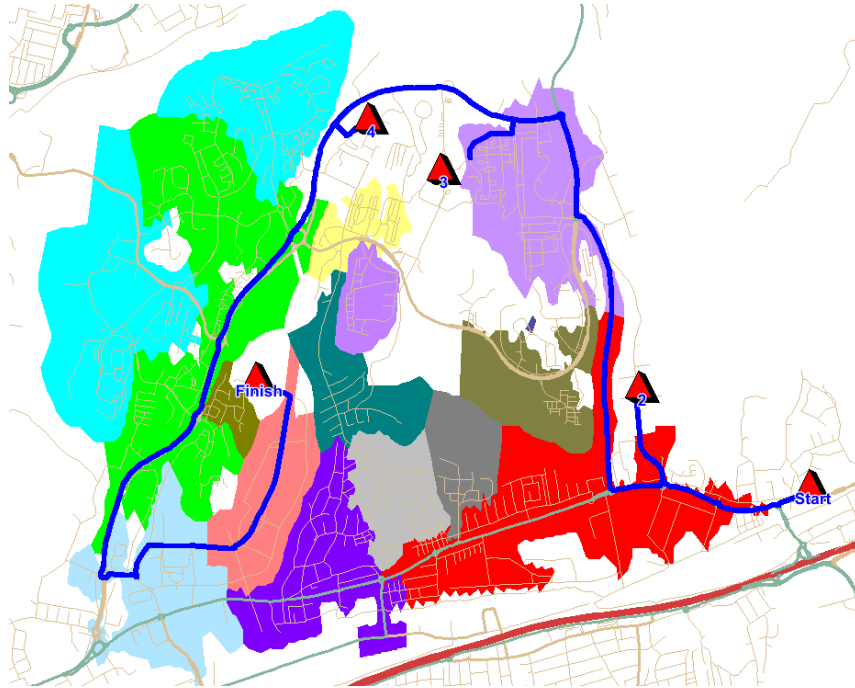
“Can we create larger restrictions zones around clusters where there are more residential buildings?”



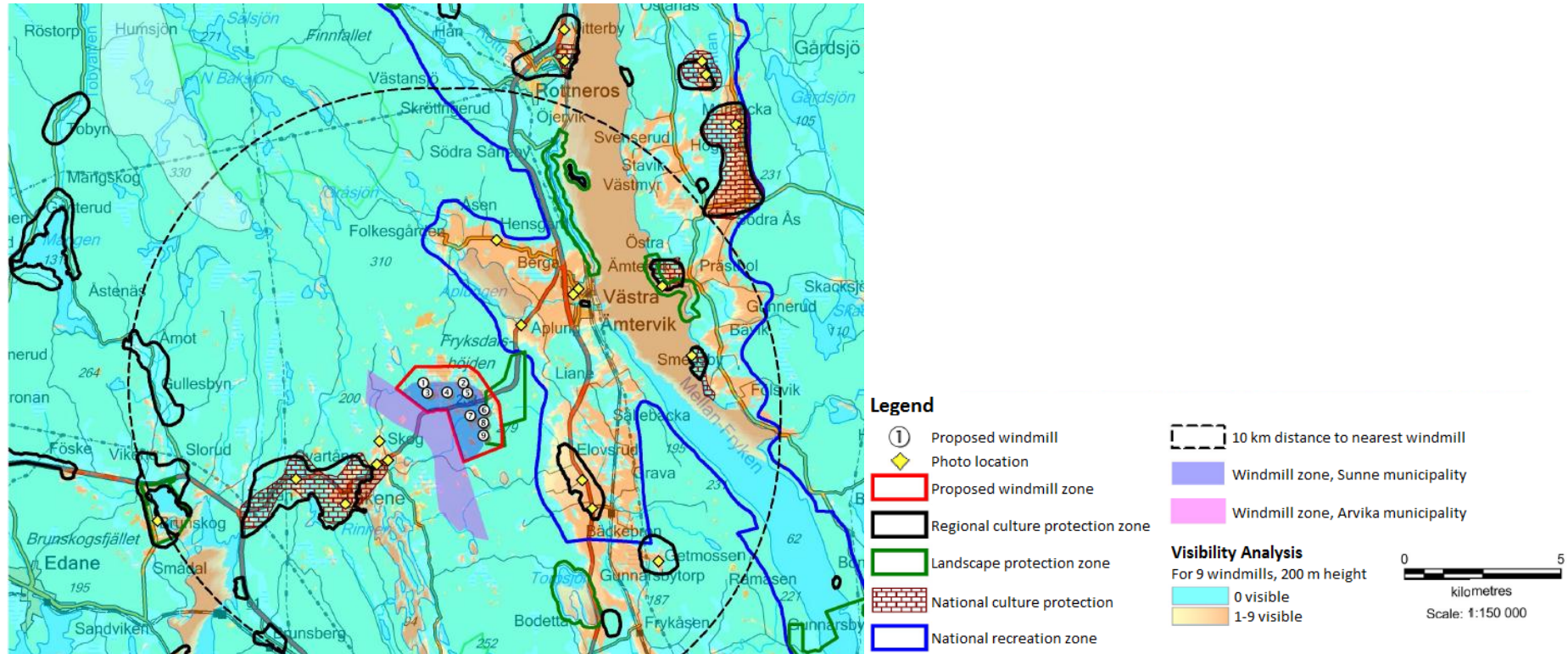
“How do different towns compare when it comes to the access to green areas in total and per citizen?”



“What capacity is needed for distributing water to all citizens in case of an emergency?”



“Where are the best locations for placing new windmill power plants, based on a multi-criteria analysis?”



Thank You!

